

# Visual Guide to Common Wildflowers of South Georgia

Bodie Pennisi, Department of Horticulture

Keren Giovengo, UGA Marine Extension

Jason Schmidt, Department of Entomology



UNIVERSITY OF GEORGIA  
EXTENSION

Wildflowers not only beautify the landscape but also provide food and shelter for myriad insects, birds, and mammals. Georgia is rich in *endemic* (belonging in a particular area or environment) species which grow in a wide variety of habitats, from coastal dunes and pine sandhills to savannas, meadows, and forests. Although many species are primarily seen in undisturbed natural habitats, others have adapted to human-created landscapes, such as roadsides and farms, and are frequently seen on road banks and edge habitats.

This publication is intended as a visual guide to common herbaceous plants encountered mainly in sunny areas in South Georgia. Although by no means inclusive or extensive, the list contains plants that are easy to recognize and valuable for wildlife. Care should be taken to preserve such species and not remove them from the wild. It is our hope that citizens will learn to recognize these beautiful plants and purchase them from local nurseries to plant in their gardens.

The species listed are known to attract a wide variety of bees, wasps, beetles, flies, and other beneficial insects, and are recommended for pollinator habitats on farmland. They bloom across the seasons, between early spring and fall. At least three species from each season should be included in a planting to ensure abundant and diverse insect presence.



Figure 1. Sunflowers, thoroughworts, and goldenrods are common wildflowers along Georgia roads in the fall.

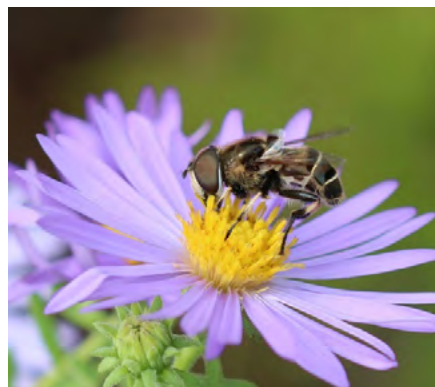
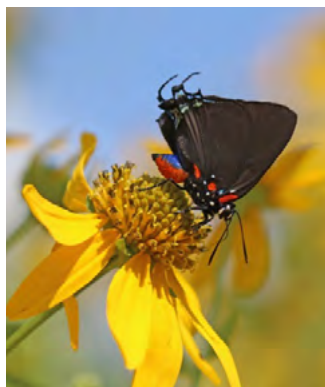
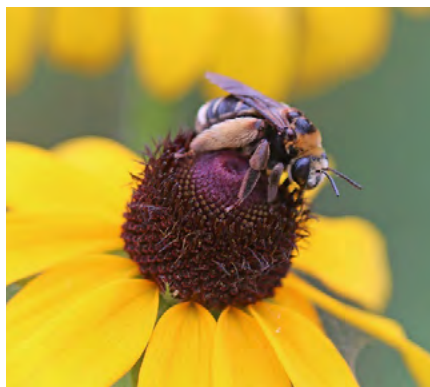


Figure 2. A wild bee, a butterfly, and a syrphid fly (left to right) visit flowers for nectar and pollen.

spp. = numerous species

A = annual

P = perennial

Illustrations refer to terms used to describe plant parts throughout this publication.

## Leaf Shapes

Ovate



Lanceolate



Cordate



Obovate



Elliptical



Linear



## Leaf Arrangements

Alternate



Opposite



Whorled



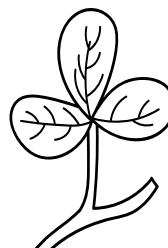
Basal Rosette



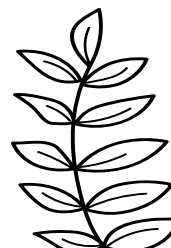
Palmately Compound



Trifoliate Leaf



Pinnately Compound

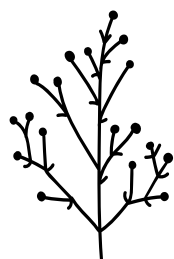


Bipinnately Compound

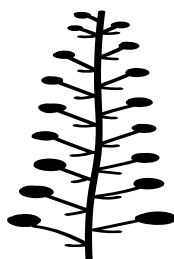


## Types of Inflorescences

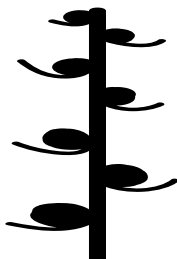
Panicle



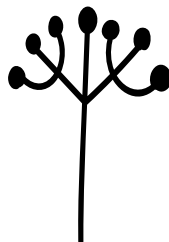
Raceme



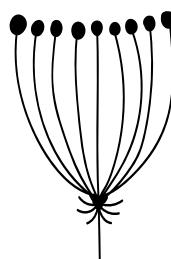
Spike



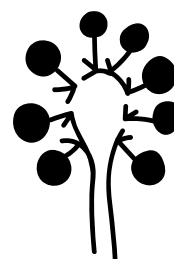
Cyme



Umbel



Head



Corymb





## Species That Bloom in Spring

**sandhills bluestar**  
*Amsonia ciliata* (P)



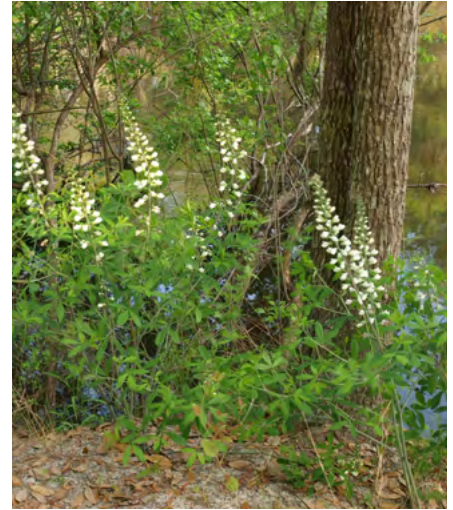
1–2 ft; clump-forming, erect to ascending, narrow to 3 in. needle-like leaves; 0.5 in. wide pale blue flowers in a loose cluster at top of stem shaped as a five-lobed “star”

**eastern bluestar**  
*Amsonia tabernaemontana*  
(P)



1–3 ft; slender, erect, narrowly oval to lance-shaped leaves; powder blue flowers in a 0.75 in. wide pyramidal terminal panicle shaped as a five-lobed “star”

**thick pod white wild indigo**  
*Baptisia alba* (P)



2–3 ft; bushy, upright, clover-like, trifoliate, bluish-green leaves, leaflets up to 2 in. long covered in small hairs; white, pea-like flowers up to 0.5 in. long borne on terminal clusters (racemes) above the foliage

**gopherweed**  
*Baptisia lanceolata* (P)



2–3 ft; bushy, trifoliate, elliptical leaves with 1–4 in. long leaflets with smooth margins; yellow, typical pea-like flowers in leaf axils in short, loosely clustered racemes

**tickseed**  
*Coreopsis lanceolata*, *C. delphinium*, *C. gladiata*, *C. linifolia*, *C. nudata* (P)



1–2 ft; erect to ascending in clumps, one to five elliptical to oblong lance-shaped leaf nodes below the inflorescence, 1–2 in. solitary flower heads with eight yellow ray florets

**blanket flower**  
*Gaillardia pulchella* (A)



1–2 ft; bushy annual, 3 in. long toothed or lobed linear to spoon-shaped leaves, 2.5 in. wide daisy-like flowerheads, eight to 14 three-toothed ray florets



## Species That Bloom in Spring

### southern sneezeweed

*Helenium autumnale*, *H. flexuosum*, *H. pinnatifidum*, *H. vernale* (P)



1–3 ft; 6 in. narrowly lance-shaped to oval leaves, 1.5–2 in. wide flower heads, eight to 15 yellow drooping narrow wedge-shaped and three-toothed ray floret disks with brown ball-shaped central disk

### sundial lupine

*Lupinus perennis* (P)



8–30 in.; erect clumped; leaves with long petioles, five to 11 oblong 0.75–2 in. leaflets, erect terminal 4–10 in. blue typical pea-shaped flowers

### butterweed

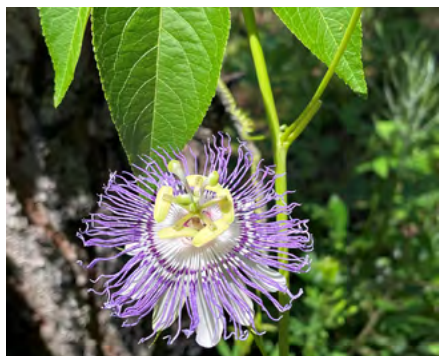
*Packera glabella*, *P. tomentosa* (A)



1–3 ft; light green to reddish green stems, elliptical to oblong 2–8 in. long leaves, deeply lobed, irregularly shaped, toothed 0.5 in. wide flower heads in terminal clusters, five to 15 yellow ray florets around a center disk of tiny florets

### purple passionflower

*Passiflora incarnata* (P)



Up to 12 ft vine; erect, trailing, or climbing by coiled tendrils; palmately lobed 2.5–8 in. long petiolate leaves, toothed, leathery, smooth, or with short, soft hairs beneath; 2.5 in. wide solitary flowers on short axillary stalks, showy complex: five oblong sepals with hornlike extensions, green outside, white inside, five sepal-like petals; a “crown” of purple and white thread-like segments

### southern beardtongue

*Penstemon australis*, *P. laevigatus* (P)



8–28 in.; one to several stems, 4 in. long lance-shaped sessile leaves often tinged reddish-purple, coarsely toothed white and pink to purple flowers up to 1 in. long in a tubular terminal panicle

### turkey tangle, fog fruit

*Phyla nodiflora* (P)



4 in.; sprawling stems branched and rooting at nodes, 2.5 in. long wedge-shaped leaves with short petioles and five teeth, semi-evergreen red tinged flowers in 0.5 in. long dense cylindrical heads



## Species That Bloom in Spring

### pickerelweed

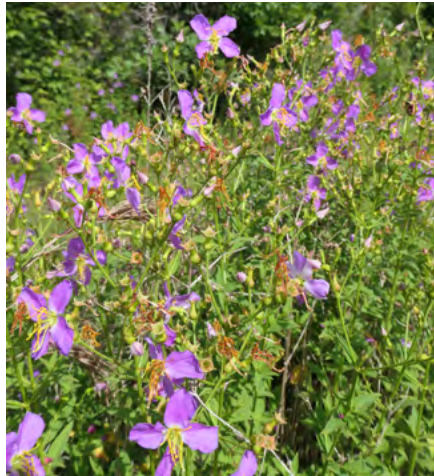
*Pontederia cordata* (P)



1–4 ft; unbranched stems, basal, erect, long-petioled, narrowly oval to arrow-shaped leaves, 8 in. long, fine parallel veins, 0.5 in. wide blue-violet flowers in 5 in. dense terminal spike, six spreading unequal lobes

### meadow-beauty

*Rhexia mariana*, *R. alifanus*, *R. lutea*, *R. nashi*, *R. virginica* (P)



32 in.; 4-angled stems, 0.75–2.5 in. long 3-veined elliptical to lance-shaped leaves, pale rose to white flowers in 2 in. wide branching terminal clusters

### lyreleaf sage

*Salvia lyrata* (P)



1–2 ft; 4-angled erect stems, dark reddish-purple oblong-oval shaped leaves, 0.5–1.25 in. long blue to lavender flowers in widely spaced whorls in a loose terminal spike

### violet

*Viola lanceolata*, *V. palmata*, *V. primulifolia*, *V. septemloba*, *V. villosa*, *V. walteri* (P)



28–18 in.; flattened and narrowly winged stem branching and sometimes bending at one to two nodes, linear and grasslike 14 in. long pale bluish green leaves, blue-violet flowers in small 0.5–0.75 in. wide cluster



2–10 in.; stemless, leaves in basal cluster, reddish petioles, 1–6 in. long, white flowers (*V. lanceolata*) with five petals

### spiderwort

*Tradescantia ohiensis* (P)



1–4 ft; erect to ascending, clump forming, sessile linear or lance-shaped 18 in. long bluish green leaves, blue, purple, or rose flowers in terminal cluster, two leaflike, 3 in. long sharp pointed bracts

Common Name	Bloom Period								
	March	April	May	June	July	August	September	October	November
sandhills bluestar									
eastern bluestar									
thick-pod white wild indigo									
gopherweed									
tickseed									
blanket-flower									
southern sneezeweed									
sundial lupine									
butterweed									
purple passionflower									
southern beardtongue									
turkeytangle									
pickerelweed									
meadow-beauty									
lyreleaf sage									
blue-eyed grass									
violet									
spiderwort									



## Species That Bloom in Summer

### butterfly milkweed

*Asclepias tuberosa* (P)



1–3 ft; erect to ascending, mostly unbranched, reddish-purple narrow oblong to lance-shaped 4 in. leaves with short petioles, orange to reddish 0.5 in. flowers in terminal and upper axillary compound umbels, five strongly reflexed corolla lobes

### beggarticks

*Bidens alba*, *B. frondosa* (A)



1–4 ft; stems branched in upper half, often purplish 0.5–4.5 in. long petioled leaves pinnately divided into three to five lance-shaped flower heads, usually solitary or in two- to three-stalked clusters, orange-yellow heads, five-lobed tubular disk florets, nonnative, widely naturalized species

### spurred pea

*Centrosema virginiana* (P)



5 ft; twining or climbing vine, leaves on petioles with tiny lance-shaped stipules, divided into three oval elliptical 2.75 in. leaflets, 1–4 pink or lavender pea-shaped flowers on slender stalks

### partridge pea

*Chamaecrista fasciculata*,  
*C. nictitans* (A)



6–22 in.; erect to sprawling annual with leaves sensitive to touch, branched light green to reddish brown stems, petiolate leaves pinnately divided into six to 14 pairs of leaflets, bright yellow flowers on 0.5 in. long stalks in small clusters

### goldenaster

*Chrysopsis mariana* (P)



1–2 ft; erect to ascending, basal and alternate oblong lance-shaped 0.75–4.5 in. long leaves (stem leaves shorter), 0.75–1.5 in. flower heads in a terminal cluster, 12–25 yellow florets with darker yellow center disk

### Atlantic pigeonwings

*Clitoria mariana* (P)



2 ft long vine; smooth and loosely ascending stems, leaves on petioles with pair of stipules at the base divided into three oval elliptical leaflets, pale blue to pink-lavender pea-shaped flowers in one to three clusters



## Species That Bloom in Summer

### bluemist

*Conoclinium coelstinum* (P)



1–3 ft; sometimes red-tinged very hairy branched stems, oval to triangular 4 in. long petiolate leaves with three main thin, blunt-toothed, hairy, and smooth veins from the base, flower heads at the end of short branches in 4 in. wide flat terminal clusters

### trick-trefoil

*Desmodium* spp. (P)



1–5 ft; one to several stems from a crown, leaves on petioles with short, narrow stipules, divided into three densely furry, oval to elliptical 1.25 in. long leaflets, long stalked pink to purple typical pea-shaped flowers

### savanna eringo

*Eryngium integrifolium* (P)



1–2 ft; stems branched above smooth subsessile, oval to lance-shaped 1–2.75 in. long coarsely toothed leaves, smaller upper leaves, greenish blue to blue flowers in compact, thimble-shaped heads less than 0.5 in. wide

### mallow

*Hibiscus aculeatus*, *H. moscheutos* (P)



4–6 ft; erect shrublike stems arising from woody crown, petiolate leaves up to 3.5 in. long with three to five deeply cut coarsely toothed and rough-hairy lobes, white to pink 5–8 in. wide funnel-shaped flowers with maroon throat and five rounded petals flowers solitary on stalks from leaf axils

### Saint John's wort

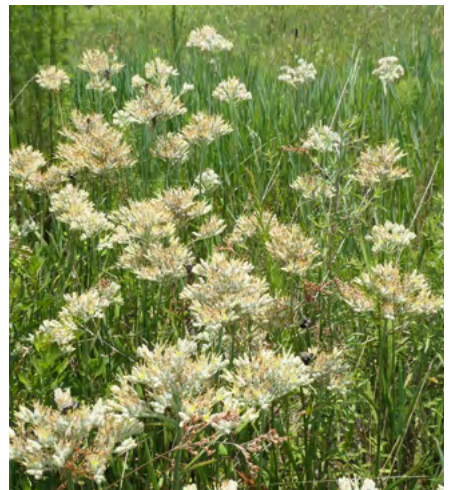
*Hypericum* spp. (P)



4–18 in.; stems reclining at base, oval to narrowly oblong 0.5–1.5 in. long leaves with a bluish tip and three to five smooth parallel veins, light orange to yellow 0.25 in. wide flowers in loose branching terminal clusters

### redroot

*Lacnanthes caroliniana* (P)



1–3 ft; unbranched stems, mostly basal overlapping 18 in. long and 0.75 in. wide leaves, 0.33 in. long pale yellow and green flowers in a terminal generally flat-topped cluster with three erect petals



## Species That Bloom in Summer

### Virginia lespedeza

*Lespedeza virginica* (P)



1–3 ft; a few to many stems, well-spaced, short-petioled leaves divided into three 1 in. long elliptical to oblong-oval leaflets, 4–6 pale purple to pinkish-white 0.25 in. long flowers on stalks from upper leaf axils

### blazing star

*Liatris spicata*, *L. tenuifolia*,  
*L. elegans*, *L. squarrosa* (P)



1–4 ft; unbranched stem, mostly clumped 12 in. long linear leaves toward the base of the plant, about 1 in. four to five pale pink to white flower heads densely arranged along a spike, five-lobed disks

### climbing hempvine

*Micania scandens* (P)



5+ ft; twining vine with cordate 2–3 in. long leaves, flat-topped clusters of white or pinkish flower heads rising from the leaf axils

### sensitive-briar

*Mimosa microphylla* (P)



3–6 ft; weakly arching stems covered with hooked hairs, petiolate leaves oblong and sensitive to touch that fold at night and during overcast weather, pompom-like clusters of flowers 0.75 in. wide

### horsemint

*Monarda punctata* (P)



2–4 ft; square stems, lanceolate or narrowly oblong–3 in. long leaves that appear white and hairy, tubular lipped 13–15 nerved corolla pale yellow and spotted with purple flowers in 2–5 small compact, head-like cymes

### rudbeckia

*Rudbeckia* spp. (P)



3–7 ft; smooth branches with white waxy coating, petiolate drooping lance shaped to broadly oval leaves, 1.5 in. wide flower heads solitary on long, erect stalks, five to 13 drooping yellow ray florets



## Species That Bloom in Summer

### blue salvia

*Salvia azurea* (P)



1–3 ft; narrowly elliptical to lance-shaped 3.5 in. long greyish green leaves, 0.5–1.5 in. long intense blue flowers in erect loose terminal spikes

### skullcap

*Scutellaria* spp. (P)



1–2 ft; single to many stems, petiolate oval to lance-shaped to narrowly elliptic leaves, bluish purple flowers in terminal raceme up to 8 in. long

Common Name	Bloom Period					
	May	June	July	August	September	October
milkweed						
beggarsticks						
spurred pea						
partridge pea						
goldenaster						
Atlantic pigeonwings						
bluemist						
tick-trefoil						
savanna eringo						
mallow						
Saint John's wort						
redroot						
Virginia lespedeza						
blazing star						
climbing hempvine						
sensitive-briar						
horsemint						
rudbeckia						
blue salvia						
skullcap						



## Species That Bloom in Fall

### gerardia

*Agalinis* spp. (A,P)



1–3 ft; erect to sprawling, slender or wiry stems, branched above, linear to needlelike 0.5–2.5 in. long dark green leaves, pinkish-purple tubular and bell-shaped flowers in a terminal raceme up to 1.5 in. long, five spreading rounded lobes

### Georgia calamint

*Clinopodium georgiana*



1–2 ft; erect, shrubby, woody stems branched and with hairy twigs, short-petioled oval to elliptical toothed and aromatic leaves up to 1.5 in. long, three to nine lavender to pale pink flowers in elongated terminal clusters mixed with leaflike bracts; each flower is about 0.5 in. long and tubular with two flaring lips

### elephant's-foot

*Elephantopus carolinianus*,  
*E. nudatus*, *E. tomentosus*  
(P)



1–3 ft; simple stems or with forked branches, sessile oval to elliptical or even diamond shaped, 2–8 in. leaves on winged petioles, lavender pink flower heads in clusters at tips of branches, disks with five lobes

### thoroughwort

*Eupatorium* spp. (P)



1–4 ft; branched stems, mostly sessile oval to lance-shaped 1.5–5 in. long leaves, narrow erect flower heads that appear fuzzy and are in branching terminal cluster, 0.33 in. five-lobed tubular disk

### goldentop

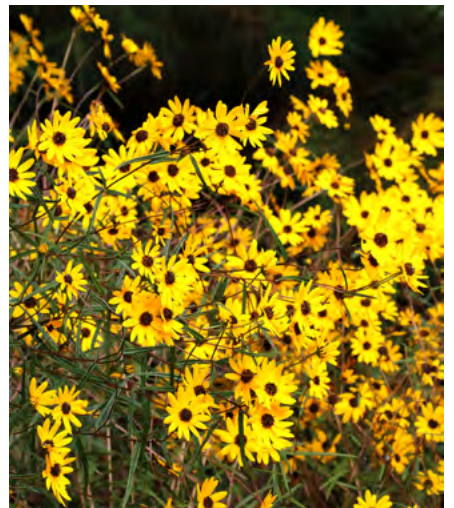
*Euthamia caroliniana* (P)



1–3 ft; unbranched smooth to slightly hairy stems, linear 1–2.5 in. long leaves; 0.33 in. wide yellow flower heads in large branched terminal clusters

### sunflower

*Helianthus angustifolia*,  
*H. radula*, *H. debilis*, *H.*  
*floridanus*, *H. hirsutus*, *H.*  
*strumosus* (P)



1–6 ft; branched leafy and rough/hairy stems, alternate and opposite linear 8 in. long leaves; 1.5–3 in. wide yellow flower heads solitary or in small clusters, eight to 21 yellow florets



## Species That Bloom in Fall

### narrowleaf silkgrass

*Pityopsis graminifolia*, *P. aspera* (P)



8–18 in.; branched stems in inflorescence covered with a mixture of silky hairs and gland-tipped hairs, linear-lance shaped leaves mostly toward stem bottom, 0.5 in. wide yellow flower heads, eight to 13 ray florets

### goldenrod

*Solidago* spp. (P)



1–5 ft; arching branched or unbranched stems, alternate sessile crowded lance-shaped to linear 1–6 in. long leaves, yellow flower heads clustered along spreading-ascending curving branches of a pyramid shaped panicle, eight to 14 ray florets

### aster

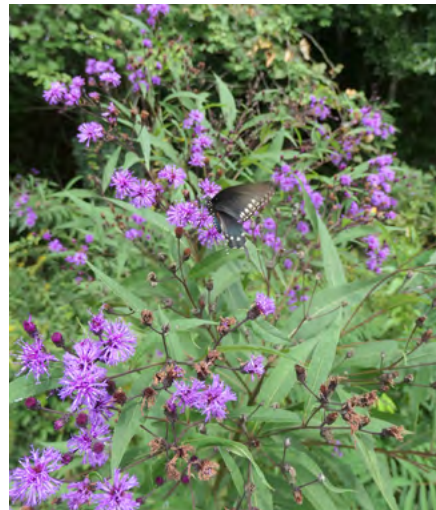
*Symphyotrichum* spp. (P)



6 in.–4.5 ft; one to several stems, 0.75–4.5 in. long lance-shaped leaves, 0.5–0.75 in. wide, white, pink, or blue flower heads in a diffuse panicle with stiffly ascending or spreading branches

### ironweed

*Vernonia angustifolia*, *V. gigantea*, *V. noveboracensis* (P)



3–10 ft; stout ribbed hairy or smooth stems, 12 in. long lance-shaped sharply toothed leaves that are typically rough-hairy on the bottom, pink flowers in terminal heads, 12–30 tubular florets



Common Name	Bloom Period					
	June	July	August	September	October	November
gerardia						
Georgia calamint						
elephant's-foot						
thoroughwort						
goldentop						
sunflower						
narrowleaf silkgrass						
goldenrod						

## References

Weakley, A. S., Waitt, D. E., & Cotterman, L. (2019). *Wildflowers of the Atlantic Southeast*. Timber Press.

Acknowledgements: This material is based upon work supported by the U.S. Department of Agriculture, under agreement USDA-NRCS NR204310XXXXC013 awarded to The University of Georgia in joint venture with WOODARD & CURRAN INC.

Disclaimer: Any opinions, findings, conclusions, or recommendations expressed in this publication are those of the author(s) and do not necessarily reflect the view of the U.S. Department of Agriculture. In addition, any reference to specific brands or types of products or services does not constitute or imply an endorsement by the U.S. Department of Agriculture for those products or services. USDA is an equal opportunity provider and employer.

The permalink for this UGA Extension publication is [extension.uga.edu/publications/detail.html?number=C1288](https://extension.uga.edu/publications/detail.html?number=C1288)